



1295 Northland Drive, Suite 200  
Mendota Heights, Minnesota 55120  
United States

T +970.219.9351  
www.jacobs.com

May 6, 2021

Mr. Brian Dunn  
U.S. Coast Guard Bridge Program (CG-BRG)

[REDACTED]  
[REDACTED]

Subject: BNSF Bismarck Bridge Replacement Project  
Revision of the project Area of Potential Effects

Dear Mr. Dunn,

Per Stipulation I.A. of the Programmatic Agreement among the U.S. Coast Guard, the North Dakota State Historic Preservation Officer, and the Advisory Council on Historic Preservation regarding the Proposed Bridge Project at Mile 1315.0 on the Missouri River near Bismarck and Mandan, Burleigh County, North Dakota, Jacobs, on behalf of BNSF, is notifying your office and the North Dakota State Historic Preservation Officer (SHPO) (copied below) of needed revisions to the Area of Potential Effects (APE). Please see the attached map that shows the existing APE as well as the proposed revisions.

The APE is being revised through two expansions. The first expansion is to include a temporary construction access route on the western side of the Missouri River. This access route is still being negotiated with the North Dakota Department of Transportation (NDDOT) and is subject to change but is being evaluated in the Draft Environmental Impact Statement (DEIS). The second expansion is to accommodate the footprints of all alternatives being considered in the DEIS. These areas were not defined when the original APE was identified, but as any one of these alternatives has the potential to affect historic properties, the APE is being expanded to include them.

While the western access route is still being negotiated and the Preferred Alternative has not been selected, the APE is being revised to include these areas in advance of publication of the DEIS. Jacobs, on behalf of BNSF, requests that your office consult with the North Dakota SHPO on these APE revisions, and that you also convey this information to the Consulting Parties within 15 days of receipt, in accordance with the Programmatic Agreement. If you have any questions or would like additional information, please do not hesitate to contact me at [REDACTED].

Thank you,

Jacobs Engineering Group, Inc.

Lori Price

Enclosures:

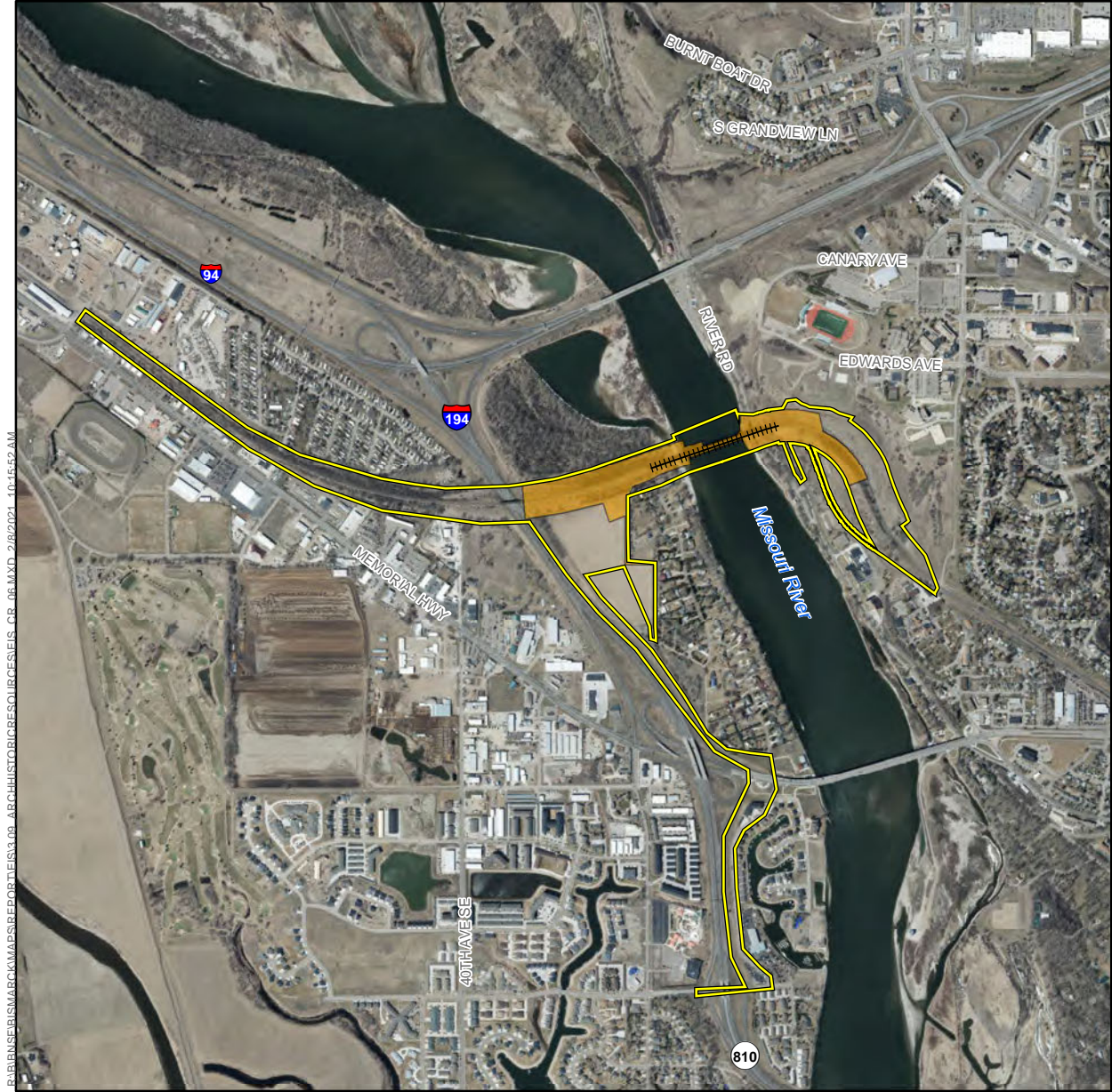


May 6, 2021  
Union Pacific Railroad Westlake Bridge Fender Replacement Project  
Revision of the project Area of Potential Effects

Attachment 1 – Revised APE Map

cc: Dr. Bill Peterson, SHPO  
Mike Herzog, BNSF

## Attachment 1 – Revised APE Map



P:\BIBSEN\BISMARCK\MAPS\REPORTS\313.08\_ARCH\HISTORIC\SOURCEFILES\_CR\_06.MXD\_2/8/2021\_10:15:52 AM

Source: (ESRI Imagery, April 2020)

**LEGEND**

- ##### Existing Bridge
- Area of Potential Effects (Original)
- Area of Potential Effects (Expanded)

