

U.S.C.G. Merchant Marine Exam

Master or Mate Less than 200 Gross Registered Tons

Q461 Assistance Towing Endorsement

(Sample Examination)

Choose the best answer to the following Multiple-Choice Questions.

1. What is the purpose of a "check" line?
- A. A line used to measure the overhead height of a bridge
 - B. A safety line attached to a man working over the side
 - C. A line used to measure water depth
 - D. A line used to slow the headway of a barge

Correct answer: D

2. Why is it NOT advisable to use nylon for alongside towing?
- A. Too difficult to make fast
 - B. Parts too readily
 - C. Too susceptible to mildew
 - D. Stretches too much

Correct answer: D

3. In illustration D024DG, which item is rigged to transmit the thrust from one barge to another barge when going ahead?
- A. I
 - B. H
 - C. E
 - D. B

Correct answer: C

4. Which is one advantage of chain over wire rope for a tow bridle?
- A. It is better suited for inland towing
 - B. Transfers towing forces better
 - C. Resists damage from chafing
 - D. Handles more easily

Correct answer: C

5. To lead the towing hawser over the center of the stern when not under a strain you could take which action?
- A. Lead it through the Norman pins
 - B. Hold it in the median position by a gob rope
 - C. Fairlead it through a stern roller chock
 - D. All of the above if the vessel is so equipped

Correct answer: D

6. A tug is "in irons" when held in a fixed position by _____.
- A. an adverse current
 - B. the weight of its tow, its being anchored, or grounded
 - C. the towing hawser snagged on the bottom
 - D. lack of power or an engine breakdown

Correct answer: C

7. When towing, what is the main reason for using a chain bridle on a wire hawser?

- A. It does not chafe.
- B. It eliminates the necessity of a swivel.
- C. It makes for an easy connection.
- D. It gives a spring effect to cushion the shock.

Correct answer: D

8. In a following sea, a wave has overtaken your vessel and thrown the stern to starboard. To continue along your original course, which action should you take?

- A. Use more left rudder
- B. Use more right rudder
- C. Increase speed
- D. Decrease speed

Correct answer: B

9. Which term defines when a vessel is swinging from side to side off course due to quartering seas?

- A. Pitchpoling
- B. Rolling
- C. Broaching
- D. Yawing

Correct answer: D

10. While towing, bridle legs of unequal lengths may cause which condition?

- A. The bridle to foul
- B. Chafing on the fairlead or bitts of the tow
- C. The components of the shorter leg to fail
- D. A bent swivel

Correct answer: C

11. In illustration D024DG below, which item refers to the face wire?

- A. I
- B. H
- C. B
- D. A

Correct answer: A

12. Why is a chain bridle preferable to a wire rope towing bridle on a long ocean tow?

- A. Requires little maintenance
- B. Chain is more flexible and has the ability to absorb shock because of its weight(catenary)
- C. Is less subject to wear and damage from abrasion
- D. All of the above

Correct answer: D

13. You have taken another vessel in tow. Which is an indicator that the towing speed is too fast?

- A. The tow line feels like it is "jumping" when touched
- B. The vessels are not in step
- C. The towed vessel goes "in irons"
- D. The catenary comes clear of the water

Correct answer: D

14. The vessel shown in illustration D025DG has broken down and you are going to take her in tow. The wind is on her starboard beam. Both vessels are making the same amount of leeway. Where should you position your vessel when you start running lines?

- A. A
- B. B
- C. C
- D. D

Correct answer: C

15. What are the legs of a tow bridle are joined together with?

- A. A hook
- B. A fishplate
- C. A tri-link
- D. A bridle plate

Correct answer: B

16. Which is the most effective method for towing and maneuvering on rivers and other restricted waters where wave action is limited?

- A. Directly astern and pushing the tow
- B. Towing alongside and parallel to the vessel it is towing
- C. Towing on the hip
- D. Towing on a hawser

Correct answer: A

17. You have a large, broken-down vessel in tow with a wire rope and anchor cable towline. Both vessels have made provision for slipping the tow in an emergency; however, unless there are special circumstances which is TRUE?

- A. They should slip simultaneously
- B. The vessel towed should slip first
- C. The towing vessel should slip first
- D. Either vessel may slip first

Correct answer: C

18. An ocean towing bridle whose legs are of equal length, but too short, may cause which condition?

- A. The bridle legs jump clear of the chocks or fairleads
- B. Unequal distribution of the load to one leg
- C. Excessive strain on each leg
- D. None of the above

Correct answer: C

19. What equipment is NOT used to protect a towing hawser?

- A. Hawser boards and chafing gear
- B. Halyards and snap hooks
- C. Seizing wire, rope yarn and marline
- D. Norman pins and tow spans

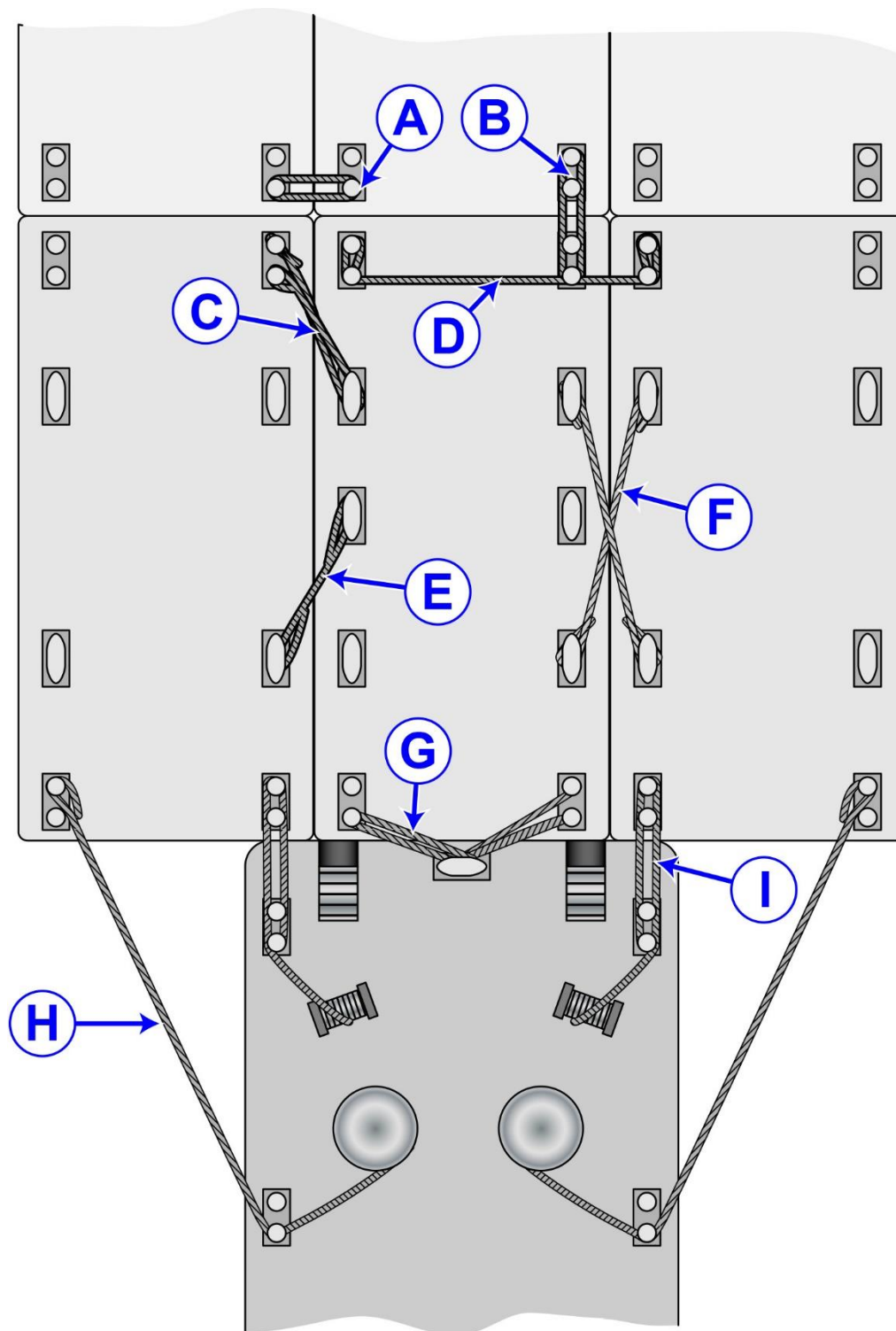
Correct answer: B

20. A tow of 9 barges is made up three abreast and three long. The towboat is faced up to the center string. What is the name of this string?

- A. Power string
- B. Push string
- C. Face string
- D. Main string

Correct answer: B

D024DG



Adapted for testing purposes only from The Deckhand's Manual
Copyright © 1961 by Kenneth Finefield

Further reproduction prohibited without permission



D025DG

