

U.S.C.G. Merchant Marine Exam
Towing Vessels – Western Rivers
Q423 Deck General
(Sample Examination)

Choose the best answer to the following Multiple-Choice Questions.

1. You are piloting your tow in a narrow river channel. How will the vessel react to a steep bank on your starboard side?
- A. The head of the tow will swing toward the bank, and the stern will swing away from the bank
 - B. The tow will be bodily drawn into the bank
 - C. The tow will be bodily pushed away from the bank
 - D. The head of the tow will swing away from the bank, and stern will swing into the bank

Correct answer: D

2. Which letter shown in illustration D030DG below represents a clove hitch?
- A. R
 - B. U
 - C. T
 - D. X

Correct answer: D

3. Fueling results in the collection of waste oil in drip pans and containers. Which is an approved method of disposing of the waste oil?
- A. Mixing it with dispersants before draining it overboard
 - B. Adding sinking agents and discharging it into the water
 - C. Draining it overboard when the vessel gets underway
 - D. Placing it in proper disposal facilities

Correct answer: D

4. Which is the BEST way to reduce your wake in a narrow channel?
- A. Shift the weight to the stern
 - B. Reduce your speed
 - C. Change your course to a zigzag course
 - D. Apply enough rudder to counter the effect of the current

Correct answer: B

5. A temporary wire eye splice made with three wire rope clamps will hold approximately what percentage of the total rope strength?
- A. 20%
 - B. 50%
 - C. 80%
 - D. 99%

Correct answer: C

6. What is the duration of a Towing Safety Management System Certificate?

- A. 1 year
- B. 2 years
- C. 5 years
- D. 10 years

Correct answer: C

7. What is the placement requirement for the number or name of a tank barge?

- A. It shall be displayed in at least 4 different positions on the barge
- B. It shall be displayed as close to the navigation lights as possible
- C. Displayed at the highest point of the barge's hull such that it can be seen from either side
- D. It shall be carved on a wooden board and attached to the barge's hull

Correct answer: C

8. What is the purpose of wire G? Illustration D024DG

- A. Prevents the boat from sliding when rudder is put hard-over
- B. Hold the boat securely to the tow enabling it to steer the tow
- C. Required on large boats, to aid when backing down
- D. As a safety backing line

Correct answer: A

9. Failure to notify the Coast Guard of an oil spill can carry a prison sentence of what duration?

- A. Not more than 1 year
- B. Not more than 2 years
- C. Not more than 3 years
- D. Not more than 5 years

Correct answer: D

10. In accordance with U.S. regulations which of the following is the proper label name for a class 4.1 substance?

- A. Dangerous when wet
- B. Flammable solid
- C. Flammable liquid
- D. Non-flammable gases

Correct answer: B

11. According to U.S. regulations, if a cargo hose shows a small leak in its fabric, when may it be used to transfer oil?

- A. After a drip pan is placed under the leak
- B. After the terminal foreman is notified
- C. Never the hose must be replaced
- D. After the hose leak is securely wrapped

Correct answer: C

12. You are in the process of adding a barge to your tow. A line run from your power capstan and around timber heads on your tow is made fast on the new barge so that it can be pulled into position. What is this line called?

- A. Capstan line
- B. Spring line
- C. Scissors wire
- D. Fore and aft line

Correct answer: A

13. Which personal lifesaving device(s) is(are) approved for use on a towboat 150 feet in length?

- A. Life preserver
- B. Buoyant vest or cushion
- C. Special purpose safety device
- D. All of the above

Correct answer: A

14. When working on a tow, which is a good safety precaution?

- A. Always remove the toothpick after tightening the ratchet
- B. Walk on the top of covered barges when possible to avoid narrow gunwales
- C. Always tighten ratchets outboard
- D. Carry loads on your inside shoulder when walking along the outside of a barge

Correct answer: A

15. Who must approve the vessel's trim and stability booklet?

- A. Society of Naval Architects and Marine Engineers
- B. National Cargo Bureau
- C. International Maritime Organization
- D. United States Coast Guard

Correct answer: D

16. Which term describes the amount of force a tug can exert on a stationary pull?

- A. Shaft horsepower
- B. Bollard pull
- C. Brake horsepower
- D. Indicated horsepower

Correct answer: B

17. What type of knot in illustration D030DG below is indicated by the Letter "J"?

- A. Plain whipping
- B. Becket bend
- C. Bowline
- D. Marline hitch

Correct answer: A

18. In accordance with U.S. regulations which of the following is the proper label name for a class 2.1 substance?

- A. Inert gases
- B. Toxic gases
- C. Flammable gases
- D. Non-flammable gases

Correct answer: C

19. Which of the following describes why topside icing, which is usually off-center, decreases vessel stability?

- A. It increases the height of the center of gravity
- B. It increases the displacement
- C. It increases the draft
- D. It reduces the pocketing of free surface

Correct answer: A

20. You would NOT secure a line to which item?

- A. Button
- B. Stand pipe
- C. Timber head
- D. Caval

Correct answer: B

21. A nylon line is rated at 12,000 lbs. breaking strain. Using a safety factor of 5, what is the safe working load (SWL)?

- A. 2,000 lbs.
- B. 2,400 lbs.
- C. 12,000 lbs.
- D. 60,000 lbs.

Correct answer: B

22. Which is a predictable result of a vessel pushing a tow that is nearing a bank or edge of a steep banked channel in the river?

- A. The stern is drawn to the bank as the head of the tow sheers off
- B. The tow continues in a straight line, but with greatly reduced maneuverability
- C. The vessel and tow will be drawn bodily into the bank unless the engines are stopped
- D. The head of the tow sheers toward the bank

Correct answer: A

23. Your tank barge requires repairs that include welding. Who normally would issue a gas-free certificate?

- A. Any Coast Guard marine inspector
- B. A certified marine chemist
- C. The port engineer
- D. The ABS marine surveyor

Correct answer: B

24. A ballasted vessel sinks enroute to a dry dock. Under these circumstances, the vessel's owner can claim which loss?

- A. Actual total loss
- B. General average
- C. Constructive total loss
- D. Particular average

Correct answer: A

25. Which is the name given to a metal ring on the bottom of a block, to which the standing part of a tackle is spliced?

- A. Swivel
- B. Loop
- C. Eye
- D. Becket

Correct answer: D

26. Which item refers to a backing wire? Illustration D024DG

- A. A
- B. C
- C. E
- D. G

Correct answer: B

27. In relation to the turning circle of a vessel, which defines the term "transfer"?

- A. The distance gained at right angles to the original course
- B. The distance the ship moves sidewise from the original course away from the direction of the turn after the rudder is first put over
- C. The distance gained in the direction of the original course
- D. The distance around the circumference of the turning circle

Correct answer: A

28. Which is TRUE concerning flanking rudders as used on the Western Rivers?

- A. Flanking rudders are portable fixtures mounted to each drag string to aid in steering
- B. The main function of flanking rudders is to stop the vessel in a shorter distance
- C. Flanking rudders are installed to protect the main rudders of the towboat
- D. They aid in the maneuverability of a towboat when going astern

Correct answer: D

29. The owner or Master of a vessel 39.4 feet in length or more pushing ahead or towing alongside in the navigable waters of the United States must ensure that each of the following is appropriate for the vessel's horsepower and tow arrangement EXCEPT which item?

- A. Hydraulic couplings
- B. Push gear
- C. Face wires
- D. Spring lines

Correct answer: A

30. A mariner whose credential has been revoked shall not be issued another credential without which of the following?

- A. approval of the Commandant
- B. taking a new examination
- C. approval of the Officer-in-Charge, Marine Inspection
- D. approval of an administrative law judge

Correct answer: A

31. Which fitting is a closed chock? Illustration WR001DG

- A. A
- B. B
- C. C
- D. D

Correct answer: D

32. What should be done with lines or gear NOT in use?

- A. Left on deck
- B. They should be conspicuously marked
- C. Stowed anywhere
- D. Secured or stowed out of the way

Correct answer: D

33. A loaded hopper barge carrying independent tanks has placards with alternating red and white quadrants on each side and at both ends. Which statement concerning this barge is TRUE?
- A. The cargo will spontaneously ignite if released to the atmosphere.
 - B. The barge should be spotted as far away from the towboat as possible.
 - C. You must operate this barge as a lead barge.
 - D. The barge must be in a protected position within the tow.

Correct answer: D

34. In relation to the turning of a vessel, which describes the term "advance"?
- A. The distance around the circumference of the turning circle
 - B. The distance gained in the direction of the original course
 - C. The distance moved sidewise from the original course when the rudder is first put over
 - D. The distance gained at right angles to the original course

Correct answer: B

35. When does the Master of a vessel tender a Notice of Readiness to the charterer?
- A. When the vessel is safely moored or at a suitable anchorage
 - B. When the vessel is in all respects ready to load
 - C. When the vessel has completed the terms of the charter party
 - D. When the vessel is in all respects ready to sail

Correct answer: B

36. Which fitting is a caval? Illustration WR001DG
- A. A
 - B. B
 - C. C
 - D. D

Correct answer: B

37. You are making tow. A loaded, open-hopper barge with independent tanks has placards, with alternating red and white quadrants, located at each side and end. You inspect the barge and find slight traces of water in the wing voids due to condensation. What should you do?
- A. Return the barge to the fleet and depart without the barge.
 - B. Refuse to accept the barge until all wing voids are dry.
 - C. Accept the barge and when weather conditions permit run with the wing voids open to ventilate the spaces.
 - D. Accept the barge and periodically check the wing voids.

Correct answer: D

38. Which is the term given to a rope made of a combination of wire and fiber, known for its flexibility and elasticity?

- A. Preformed
- B. Independent
- C. Spring lay
- D. Lang lay

Correct answer: C

39. You are berthed at a cargo facility where you have just completed discharging a dangerous cargo. You must complete topside repairs involving hot-work before sailing. Which of the following statements is TRUE?

- A. The Captain of the Port may give specific approval to make hot-work repairs.
- B. The repair area must be inspected by a marine surveyor to ensure that it can be done safely.
- C. Hot-work repairs at such a facility are prohibited.
- D. You can make repairs with permission of the facility owner since you are empty and the cargo is on the facility.

Correct answer: A

40. Which of the following is issued a Towing Safety Management System (TSMS) Certificate?

- A. The owner or managing operator
- B. The Master of the vessel
- C. TSMS Certificates are not issued
- D. TSMS are issued to the vessel

Correct answer: A

41. Where can the deepest water when rounding a bend in a river be located?

- A. In the center of the river
- B. Toward the inside of the bend
- C. Toward the outside of the bend
- D. Toward the center of the river just before the bend, then change course for the river's center after the bend

Correct answer: C

42. If given equal care, nylon line should last how many times longer than manila line?

- A. Three
- B. Four
- C. Five
- D. Six

Correct answer: C

43. Fire protection regulations for towing vessels require any fuel line to have which item?

- A. A gate valve easily operated in the space where the tank is located
- B. A drain cock at the lowest point in the fuel line
- C. A shut-off check valve at the top of the tank
- D. A remotely operated fuel shut-off valve located at the tank

Correct answer: D

44. What is the number of fire extinguishers required on an uninspected "Motor vessel" based on?

- A. The vessel's length
- B. The number of crew members
- C. The vessel's gross tonnage
- D. The vessel's draft

Correct answer: C

45. In the illustration what does item "A" represent? Illustration D024DG

- A. Scissor wire
- B. Drag wire
- C. Tandem wire
- D. Breast lashing

Correct answer: D

46. The Federal Water Pollution Control Act requires the person in charge of a vessel to immediately notify the Coast Guard as soon as he knows of any oil discharge. Failure to notify the Coast Guard can lead to a monetary fine and imprisonment up to what duration?

- A. 5 years
- B. 3 years
- C. 2 years
- D. 1 years

Correct answer: A

47. Which statement is TRUE concerning the placard entitled "Discharge of Oil Prohibited"?

- A. It must be located in a conspicuous place in the wheelhouse.
- B. It is required on all vessels.
- C. It must be located at the bilge and ballast pump control station.
- D. All of the above

Correct answer: C

48. What shape barge offers the least resistance in river towing?

- A. Barges with raked shaped bows
- B. Ship-shaped barges
- C. Round ended barge
- D. A square ended barge

Correct answer: A

49. When underway and proceeding ahead, as the speed increases, what happens to the pivot point?

- A. The pivot point will remain stationary
- B. The pivot point will move forward
- C. The pivot point will move lower
- D. The pivot point will move aft

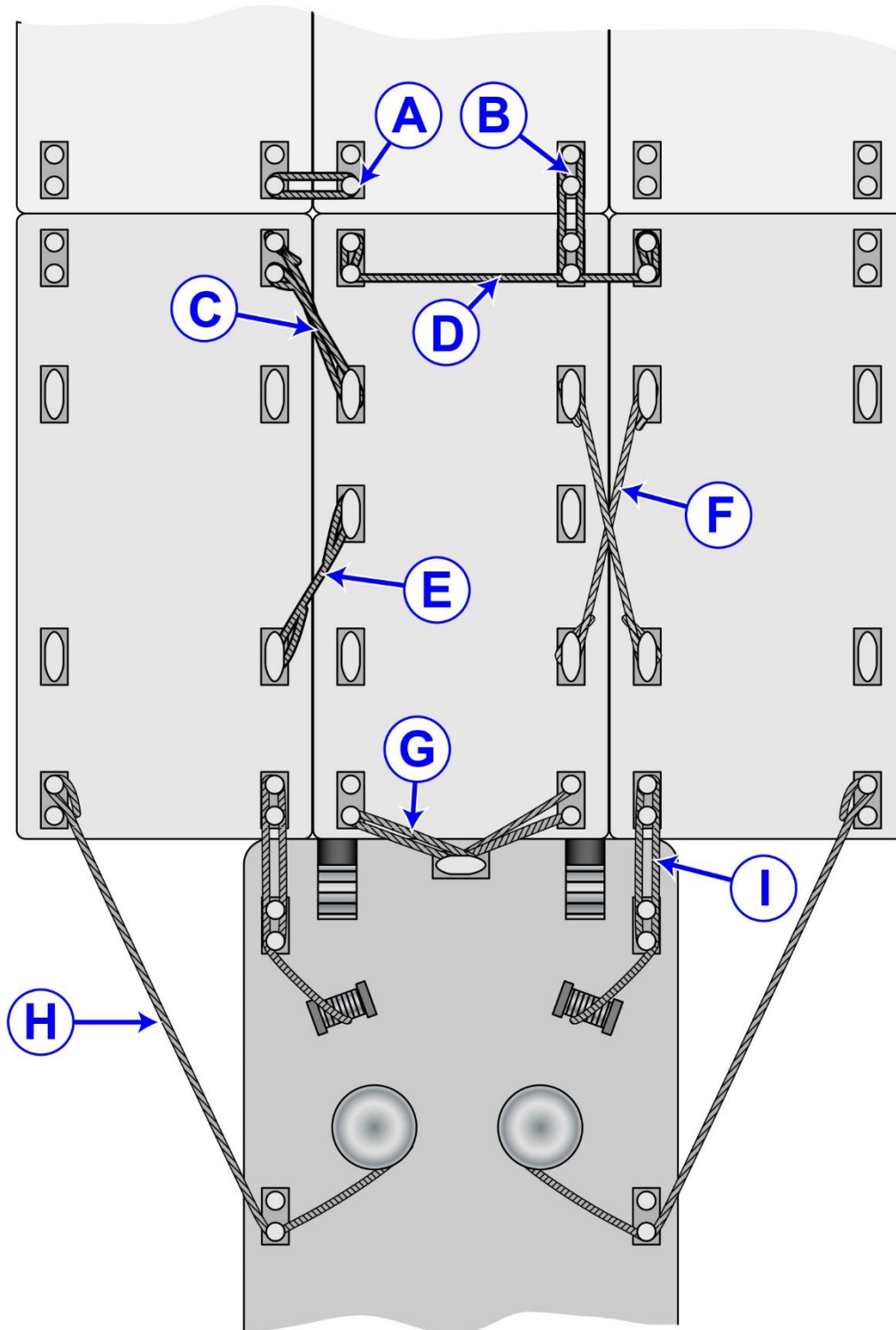
Correct answer: B

50. When passing a moored vessel in a narrow channel which actions will help minimize wake damage?

- A. Reduce speed and maintain control.
- B. Check the rudder several times while passing the vessel
- C. Stay on outside of channel and make a notation in the log
- D. Go half astern when abeam of the moored vessel

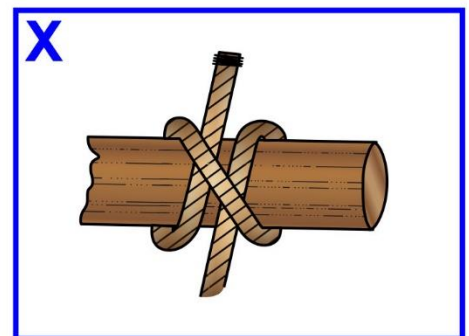
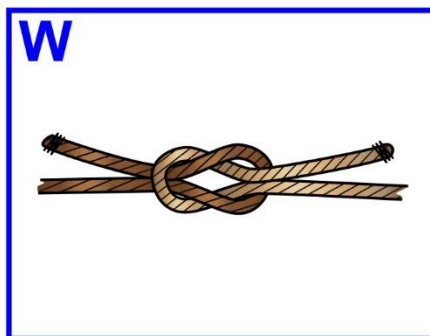
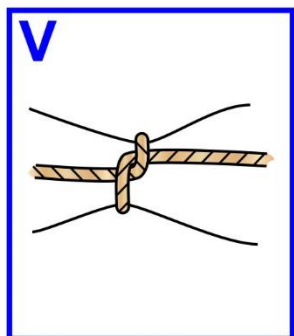
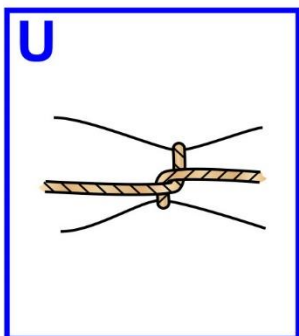
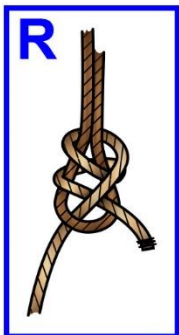
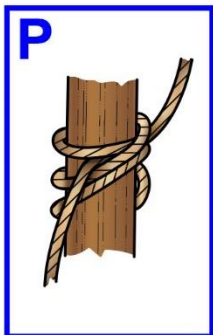
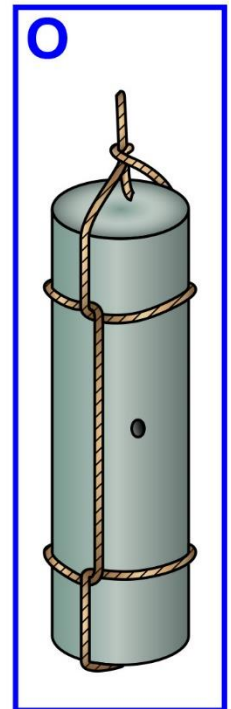
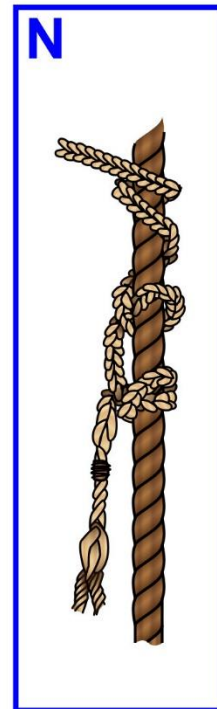
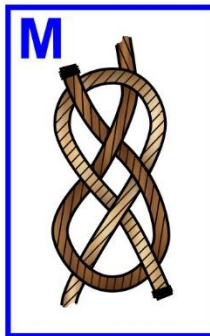
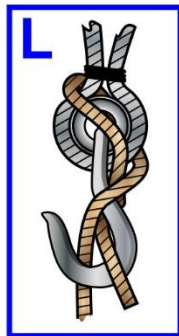
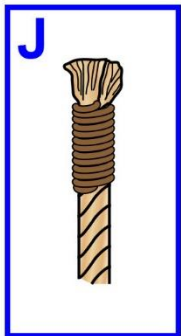
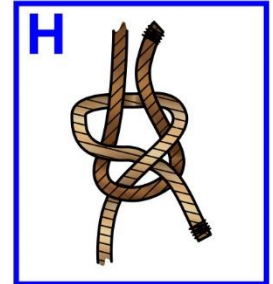
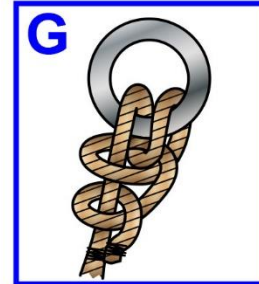
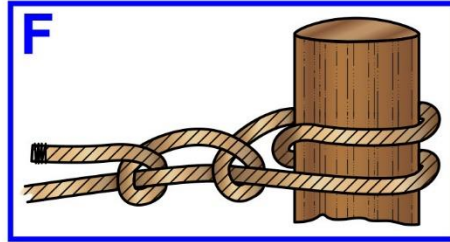
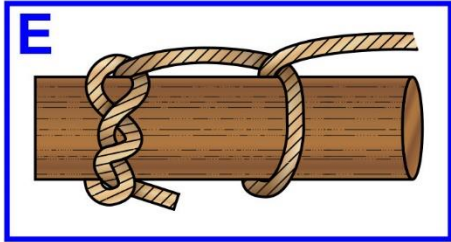
Correct answer: A

D024DG



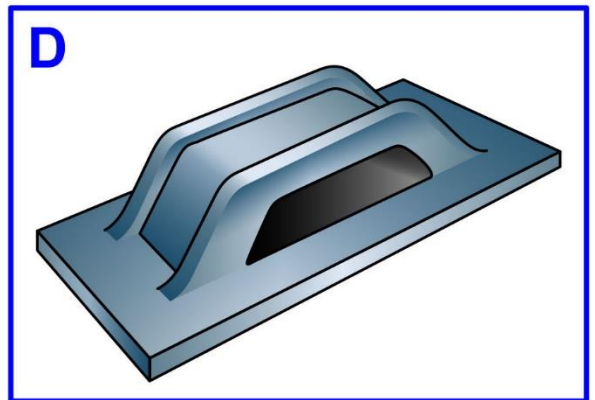
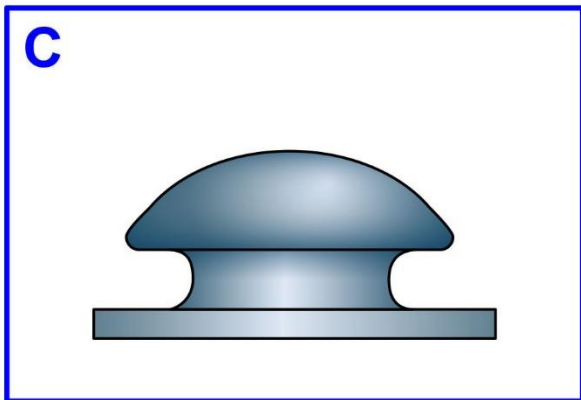
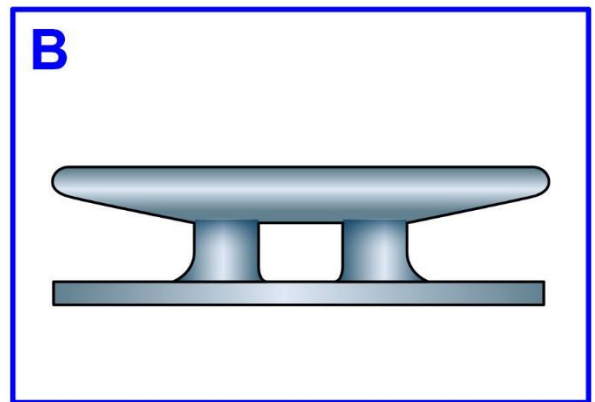
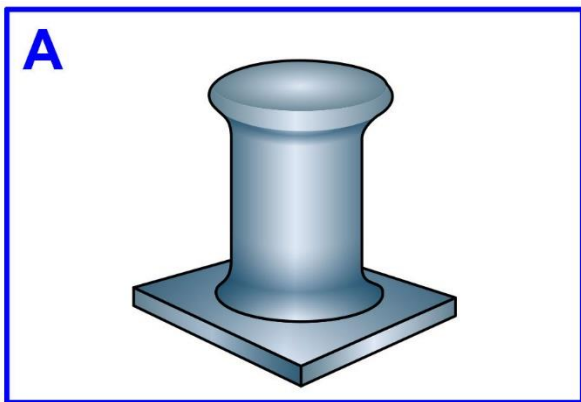
Adapted for testing purposes only from The Deckhand's Manual
Copyright © 1961 by Kenneth Finefield
Further reproduction prohibited without permission

D030DG



Adapted for testing purposes only from NOEL, Knight's Modern Seamanship, 17th edition
Copyright © 1984 by Van Nostrand Reinhold Company Inc.
Further reproduction prohibited without permission

WR001DG



Adapted for testing purposes only from The Deckhand's Manual
Copyright © 1961 by Kenneth Finefield
Further reproduction prohibited without permission