

U.S.C.G. Merchant Marine Exam

Master or Mate Less than 200 Gross Registered Tons

Q341 Deck Safety

(Sample Examination)

Choose the best answer to the following Multiple-Choice Questions.

1. What is the primary hazard, other than fire damage, associated with a class C fire?
- A. Possibility of reflash
 - B. Electrocution or shock
 - C. Flashover
 - D. Explosion

Correct answer: B

2. If you have a fire in the engine room, what is the FIRST action you should take?
- A. Discharge the fixed CO2 system into the engine room
 - B. Maneuver your vessel into the wind
 - C. Secure the fuel supply and ventilation to the engine room
 - D. Have all of your crew get into the liferaft

Correct answer: C

3. Which statement is TRUE concerning gasoline vapors on board a vessel?
- A. They should be vented into the engine to improve combustion.
 - B. They are heavier than air and will settle in the lowest part of the vessel.
 - C. They should be vented into the wheelhouse.
 - D. They are lighter than air and will settle in the highest part of the vessel.

Correct answer: B

4. What may the firing of a red star signal mean?
- A. "You are seen - assistance will be given as soon as possible"
 - B. "This is the best place to land"
 - C. "Slack away"
 - D. "Tail block is made fast"

Correct answer: C

5. Which defines the flash point of a liquid?
- A. The temperature at which a liquid will burn steadily
 - B. The temperature at which a liquid will give off flammable vapors
 - C. The temperature at which a liquid will explode
 - D. The temperature that a liquid must reach before it will flow readily

Correct answer: B

6. When the mainline valve of a self-contained breathing apparatus is open, the bypass valve should be _____.
- A. partially opened
 - B. completely open
 - C. completely closed
 - D. disconnected

Correct answer: C

7. Your vessel has lifeboats on both sides. Where is Lifeboat No. 2 located?

- A. Aft of lifeboat No. 1 on the starboard side
- B. Forward of lifeboat No. 4 on the starboard side
- C. Forward of lifeboat No. 4 on the port side
- D. All of the above

Correct answer: C

8. The "Vessel Bridge-to-Bridge Radiotelephone Act" applies to which towboat?

- A. A 60-foot towboat pushing ahead
- B. A 100 GT towboat, 24 feet in length
- C. A 90-foot towboat tied to the pier
- D. A 400 GT towboat anchored

Correct answer: A

9. What is the purpose of the intake/exhaust valves in a diesel engine?

- A. They synchronize the ignition spark
- B. They regulate the combustion cycle
- C. They supply and regulate the lubricant flow
- D. They supply cooling water

Correct answer: B

10. A ship station license for your radiotelephone is valid for which of the following terms?

- A. One year
- B. Two years
- C. Ten years
- D. The life of the vessel

Correct answer: C

11. If a lifeboat is stowed 40 feet above the light water draft and 200 feet from the bow, how long must the sea painter be?

- A. One third the length from the bow to where the lifeboat is stowed
- B. 80 feet
- C. Sufficiently long enough to reach the water when the vessel has an adverse list of 15°
- D. 160 feet

Correct answer: B

12. Which extinguishing agent is most effective on a mattress fire?

- A. CO₂
- B. Dry Chemical
- C. Halon
- D. Water

Correct answer: D

13. What is the usual depth of a beam bracket?

- A. 5 times the depth of the beam
- B. 10 times the depth of the beam
- C. same depth as the beam
- D. 2 1/2 times the depth of the beam

Correct answer: D

14. When using the rainwater collection tubes on a liferaft, what should be done with the first collection?

- A. It should be used to boil food
- B. It should be saved to be used at a later time
- C. Passed around so all can drink their fill
- D. Poured overboard because of salt washed off the canopy

Correct answer: D

15. Which is TRUE of the vessel's Sheer Plan?

- A. The plan is an endwise view of the ship's molded form
- B. The plan shows a longitudinal side elevation
- C. The plan is usually drawn for the port side only
- D. The plan has the forebody to the right of centerline and afterbody to the left of centerline

Correct answer: B

16. When evacuating a seaman by helicopter lift, which statement is TRUE?

- A. The hoist area should be located as far aft as possible so the pilot will have a visual reference while approaching.
- B. The drop line should be grounded first then secured as close to the hoist point as possible.
- C. The vessel should be stopped with the wind dead ahead during the hoisting operation.
- D. Flags should be flown to provide a visual reference as to the direction of the apparent wind.

Correct answer: D

17. How should a look-out, in the merchant service, report sightings?

- A. Gyro bearings
- B. Relative bearings
- C. Magnetic bearings
- D. True bearings

Correct answer: B

18. In illustration D014SA below, which item number correctly identifies the external lifelines?

- A. 1
- B. 8
- C. 12
- D. 16

Correct answer: C

19. A drill must be conducted in the use of the line throwing appliance. How often is this drill required to be conducted?

- A. 2 months
- B. 3 months
- C. 4 months
- D. 5 months

Correct answer: B

20. In illustration D033DG below, what is the joint indicated by letter D?

- A. A sheet line
- B. A seam
- C. A butt
- D. A span

Correct answer: C

21. What is the lifesaving signal for "You are seen - Assistance will be given as soon as possible"?

- A. Green star rocket
- B. Red star rocket
- C. Orange smoke signal
- D. Vertical motion of a flag

Correct answer: C

22. Inflatable liferafts shall be serviced at an approved servicing facility every 12 months or not later than the next vessel inspection for certification. However, the total elapsed time between servicing cannot exceed which time frame?

- A. 12 months
- B. 15 months
- C. 17 months
- D. 18 months

Correct answer: C

23. Which is TRUE of the spray of water in low-velocity fog?

- A. It will have about the same range as high-velocity fog
- B. It will have greater range than high-velocity fog
- C. It will have lesser range than high-velocity fog
- D. It will have greater range than a solid stream

Correct answer: C

24. In painting a lifeboat following its overhaul, which parts must be painted bright red?

- A. The fuel tanks
- B. The top 2-1/2 inches of each side
- C. The thwarts
- D. The releasing gear lever

Correct answer: D

25. In ship construction, which is TRUE concerning frame spacing?

- A. Spacing is uniform over the length of the vessel, with the exception of the machinery spaces, where it is reduced due to increased stresses
- B. Spacing is greater at the bow and stern
- C. Spacing is reduced at the bow and stern
- D. Spacing is uniform over the length of the vessel

Correct answer: C

26. When compared to low-expansion foam, a high-expansion foam will _____.

- A. be heavier
- B. be drier
- C. not cling to vertical surfaces
- D. be more heat resistant

Correct answer: B

27. Which is TRUE of outlets in gasoline fuel lines of your small vessel?

- A. They are permitted for bleeding air from lines
- B. They are permitted for draining fuel from lines
- C. They are permitted for drawing fuel samples
- D. They are prohibited

Correct answer: D

28. What is the period of validity of a De-Rat certificate?

- A. Specific voyage
- B. 6 months
- C. 1 year
- D. 2 years

Correct answer: B

29. For the purpose of training and drills, if reasonable and practicable, how frequently should rescue boats be launched with their assigned crew?

- A. Once a year
- B. Once a week
- C. Once a month
- D. Twice a year

Correct answer: C

30. Where would the number 3 lifeboat be located?

- A. Behind boat number 1 on the port side
- B. The forward boat on the starboard side
- C. Behind boat number 2 on the port side
- D. Behind boat number 1 on the starboard side

Correct answer: D

31. Which space(s) on your cargo vessel must have a fire detection system?

- A. Any compartment adjacent to one containing explosives
- B. Any compartment containing explosives
- C. Enclosed spaces which are "specially suitable for vehicles"
- D. All of the above

Correct answer: D

32. Which is TRUE of a combination or all-purpose nozzle?

- A. It can produce a solid stream and foam
- B. It produces a solid stream only
- C. It produces low-velocity fog only
- D. It can produce a solid stream or fog

Correct answer: D

33. Where is a permanently installed system of gas detection required?

- A. Air locks.
- B. Cargo pump rooms.
- C. Cargo compressor rooms.
- D. All of the above.

Correct answer: D

34. Where a propeller shaft passes through the hull, which device prevents water from entering the hull?

- A. Stuffing box
- B. Stop-water
- C. Sea cock
- D. Propeller boss

Correct answer: A

35. A 750-foot passenger vessel operating on the Great Lakes, not subject to SOLAS regulations, is required to carry how many ring life buoys?

- A. 24
- B. 18
- C. 12
- D. 6

Correct answer: A

36. What term indicates the length measured along the summer load line from the intersection of that load line with the foreside of the stem and the intersection of that load line with the aft side of the rudder post?

- A. Length overall
- B. Length between perpendiculars
- C. Register length
- D. Length on the waterline

Correct answer: B

37. Which term is used to describe the horizontal port or starboard movement of a vessel?

- A. Sway
- B. Surge
- C. Heave
- D. Yaw

Correct answer: A

38. Fire hose should be washed with _____.

- A. caustic soap
- B. a holystone
- C. mild soap and fresh water
- D. salt water and a wire brush

Correct answer: C

39. Which is the quickest method to stop a small diesel engine whose throttle or governor has become stuck open?

- A. Drain the fuel tank
- B. Turn off the ignition switch
- C. Apply the shaft brake
- D. Close the fuel supply valve

Correct answer: D

40. You board an inflatable liferaft that has been hand launched from a sinking vessel. What should you do FIRST after everyone is onboard the liferaft?

- A. Operate the radio equipment.
- B. Cut the painter.
- C. Open the equipment pack.
- D. Ventilate the liferaft of CO₂.

Correct answer: B

41. Which action is routinely performed at the annual servicing and inspection of a dry chemical cartridge-operated portable fire extinguisher?

- A. Inspect and weigh the cartridge.
- B. Test the pressure gauge for correct reading.
- C. Pressure test the discharge hose.
- D. Replace the dry chemical.

Correct answer: A

42. When should the control of flooding of your vessel be addressed?

- A. First
- B. Following restoration of vital services
- C. Following control of fire
- D. Only if a threat exists

Correct answer: C

43. Why is it desirable to have screens on the vents of potable water tanks?

- A. To stop insects from entering
- B. To prevent explosions
- C. To filter the incoming air
- D. To prevent backups

Correct answer: A

44. Why is it necessary to secure the forced ventilation to a compartment where there is a fire?

- A. To protect firefighting personnel from smoke
- B. To allow the exhaust fans to remove smoke
- C. To prevent additional oxygen from reaching the fire
- D. To extinguish the fire by carbon monoxide smothering

Correct answer: C

45. You are trying to rescue survivors from a wrecked vessel on fire. How should you make your approach?

- A. To windward of the wrecked vessel
- B. To leeward of the wrecked vessel
- C. At a speed of at least that of the wrecked vessel
- D. At a speed of at most one-half that of the wrecked vessel

Correct answer: A

46. Which condition is necessary for a substance to burn?

- A. The temperature of the substance must be equal to or above its fire point.
- B. The air must contain oxygen in sufficient quantity.
- C. The mixture of vapors with air must be within the "explosive range."
- D. All of the above

Correct answer: D

47. What can cargo hold bilge soundings indicate?

- A. The amount of condensation in the hold
- B. If the vessel is taking on water
- C. If the cargo is leaking into the cargo hold
- D. All of the above

Correct answer: D

48. When shoring a damaged bulkhead, effort should be taken to spread the pressure over the _____.

- A. minimum possible area
- B. nearest watertight door
- C. maximum possible area
- D. nearest longitudinal girder

Correct answer: C

49. A wooden plug fitted tightly in the vent of a damaged tank may prevent which situation?

- A. The tank from collapsing
- B. The tank developing free surface
- C. Developing free surface moment
- D. The tank filling completely

Correct answer: D

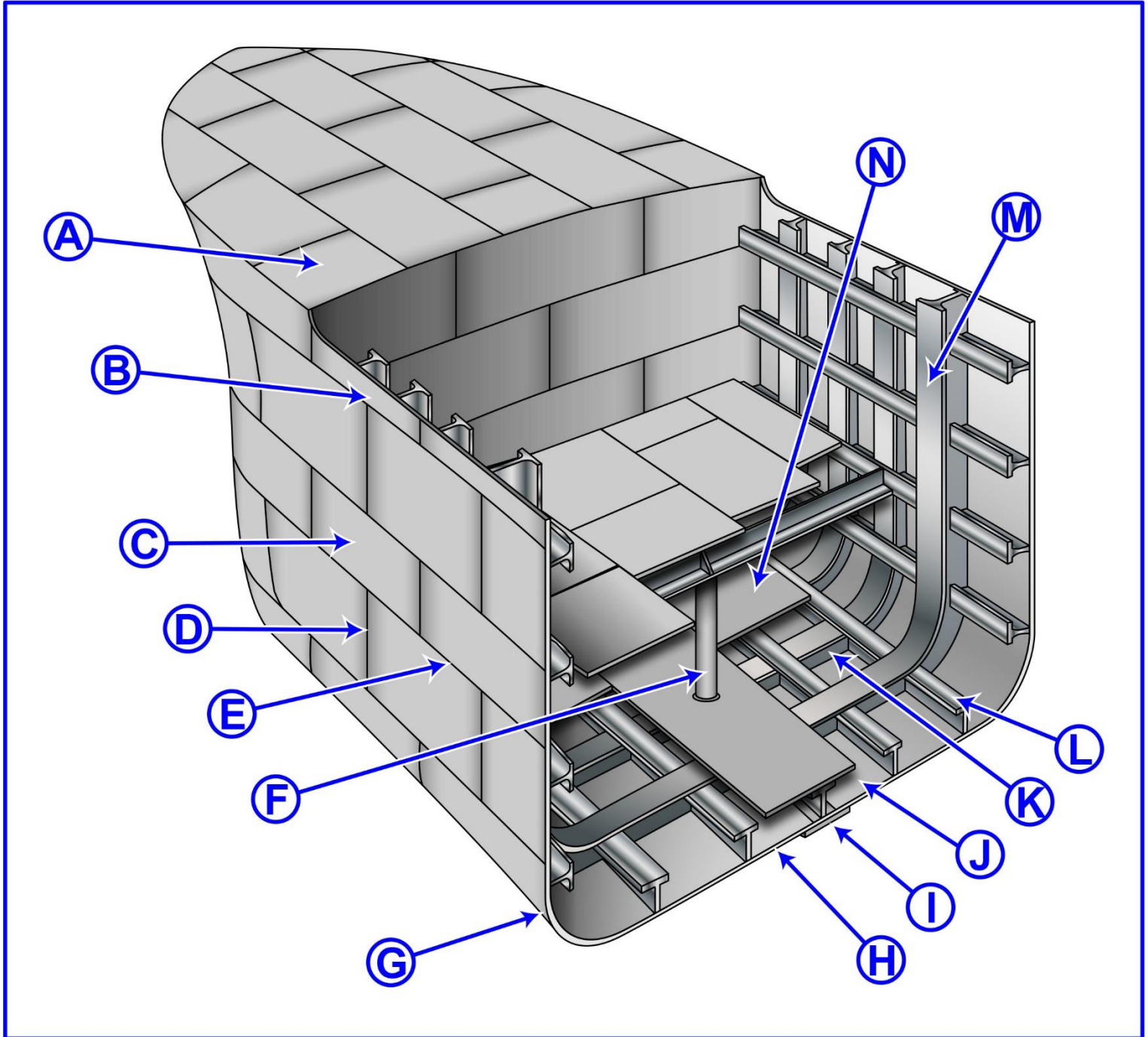
50. Your ship is sinking rapidly. A container containing an inflatable liferaft has bobbed to the surface upon functioning of the hydrostatic release. Which action should you take?

- A. Manually open the container and inflate the liferaft with the hand pump.
- B. Cut the painter line so it will not pull the liferaft container down.
- C. Take no action because the painter will cause the liferaft to inflate and open the container.
- D. Swim away from the container so you will not be in danger as it goes down.

Correct answer: C



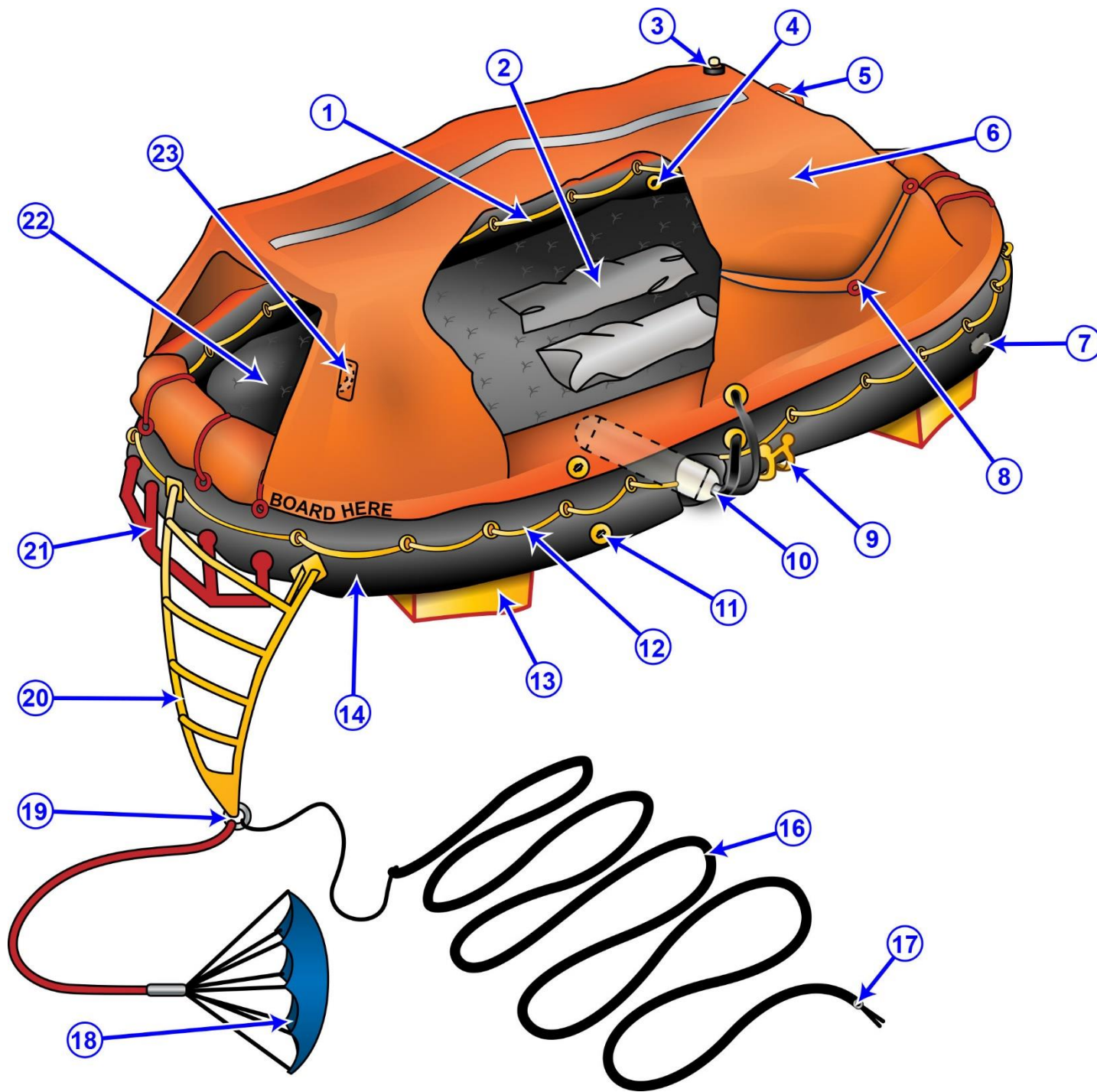
D033DG



Adapted for testing purposes only from Hull Maintenance Technician
NAVEDTRA 14119
Further reproduction prohibited without permission



D014SA



Adapted for testing purposes only from Water Survival Manual
Copyright © 1991 by Seafarers Harry Lundeberg School of Seamanship
Further reproduction prohibited without permission