

SUB-COMMITTEE ON STABILITY AND
LOAD LINES AND ON FISHING VESSELS
SAFETY
55th session
Agenda item 9

SLF 55/9/2
14 December 2012
Original: ENGLISH

**DEVELOPMENT OF PROVISIONS TO ENSURE THE INTEGRITY AND UNIFORM
IMPLEMENTATION OF THE 1969 TM CONVENTION**

Comments on the report of the correspondence group

Submitted by the International Association of Classification Societies (IACS)

SUMMARY

Executive summary: This document provides comments on the report of the Correspondence Group on the Development of Provisions to Ensure the Integrity and Uniform Implementation of the 1969 TM Convention, to support the Sub-Committee's further consideration of the draft Unified Interpretations

Strategic direction: 2

High-level action: 2.0.1

Planned output: 2.0.1.5

Action to be taken: Paragraph 6

Related documents: SLF 55/9, SLF 55/INF.2 and SLF 55/INF.11

Background

1 The Sub-Committee, at its fifty-fourth session (16 to 20 January 2012) agreed to establish a correspondence group, under the coordination of the United States, in which IACS was able to participate.

2 IACS has reviewed the report of the correspondence group (SLF 55/9 and SLF 55/INF.2) and offers the following comments and observations.

Discussion

3 Document SLF 55/INF.2, annex 3, page 14, issue 3.p Proposal 1. The text of the proposed revision was an IACS proposal that, on further consideration, IACS would prefer to read (using additions/deletions): "...should be included in this total volume if the area on the deck is greater than 1 m², and or the volume exceeds 1 m³."

4 Document SLF 55/INF.2, annex 3, page 19, issue 5.i. IACS would like to offer a third proposal as follows: "If the vertical plates or other similar supporting structures along the line of the exposed sides under an overhead deck exceed [0.60 m]/[1 frame] the portion of space protected by such structures should be included in the total volume of all enclosed spaces (V), see figure 1". A version of figure 1 is provided at the annex to this document.

5 A number of proposals were made by IACS to the correspondence group, which IACS believes would be further clarified and explained to the end-users of the Unified Interpretations if appropriate diagrams were to be developed. Due to time constraints, IACS was unable to provide draft versions of these diagrams to the correspondence group for its consideration. IACS has now prepared these diagrams and they are provided at the annexes to document SLF 55/INF.11.

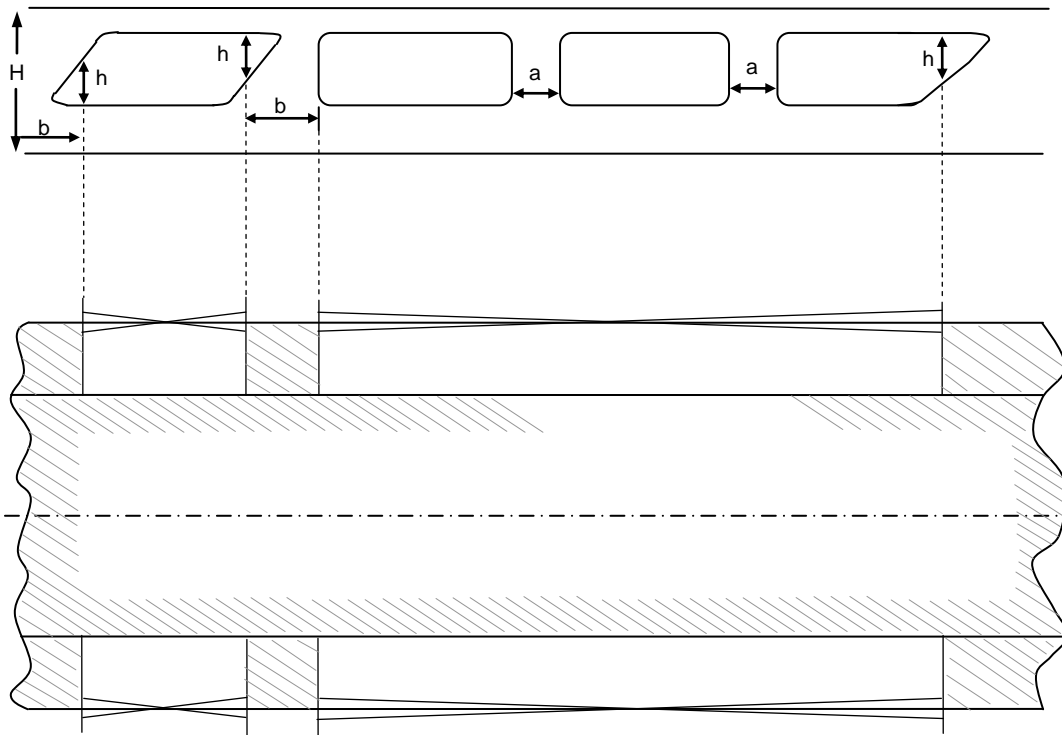
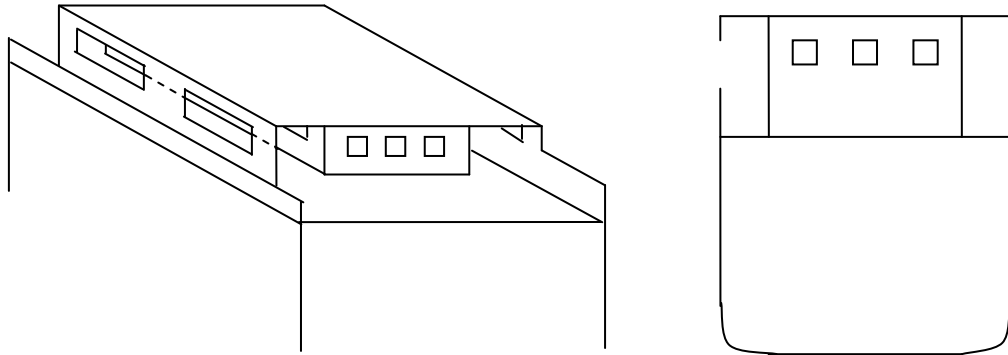
Action requested of the Sub-Committee

6 The Sub-Committee is invited to consider the comments and proposals made in paragraphs 3 to 5 above and the diagrams provided at the annexes to document SLF 55/INF.11 for use in the draft unified interpretations of the 1969 Tonnage Convention, and decide as appropriate.

ANNEX

Figure 1

Issue 5.i Rails and fashion plating for side openings



= Spaces included in the total volume (V)

H = Height from deck to deck

h = 0.75 m or 1/3 H whichever is the greater

a = Supporting structures \leq 0.60 m [/ 1 frame]

b = Supporting structures $>$ 0.60 m [/ 1 frame]