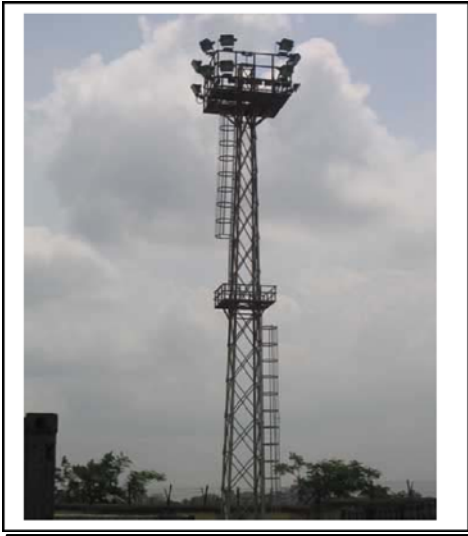


Best Practice: Light Towers Double as Guard Towers



Category:	Lighting
Location First Observed:	Port of Cochin, India
Date First Observed:	May, 2005

Description: Each of the more than 20 high power lighting towers on the facility are built with elevated platforms that permit guards or port officials to climb the towers and observe the port, adjacent waterway, and surrounding area from an elevated position.

Discussion: Building light towers that double as elevated observation platforms offer a port facility a number of advantages, including significantly enhanced security. In event of a security breach, guards or law enforcement can use the towers to detect intruders on the facility. In event of an attack on a facility, the elevated towers offer guards or law enforcement an elevated tactical advantage against armed adversaries. Platforms on the light towers displayed above permit an excellent view both within the facility, and over the wall to the outside of the facility. Towers can also be used by port managers to assess operational efficiency of various port operations, and the supervision of employees and contractors.

Potential Down-side: If not secured against unauthorized access, intruders or attackers can climb the towers and use the elevated position to shoot at employees or guards, and/or to observe security personnel approaching their positions. Access ladders must be closed and locked so that only authorized personnel can use them.

Conclusion: This is a very useful construction concept, that doubles the function of the light towers and significantly enhances intruder detection and incident response.

Cost: Depending on height and type of construction, integrating an elevated platform on light towers can cost between \$1,000 and \$5,000 per light tower.