



# Commercial Fishing Vessel Safety Brief to the 39th Commercial Fishing Safety Advisory Committee

Mr. Scott Wilwert



# D17 COMMERCIAL FISHING VESSEL SAFETY

## Statistics



### FY-17 and FY-18 Comparison

**Exams Conducted: 1707**

**Operational Fatalities: 10**

**Fatality Summary:**

**Vessel Capsizing: 8**

**PIW/MOB: 2**

**Outreach Trips:**

**-33 Communities**

**Exams Conducted: 1652**

**Operational Fatalities: 10**

**Fatality Summary:**

**Dive harvest : 2**

**PIW/MOB: 4**

**On-board Accident: 1**

**Vessel Capsizing: 3**

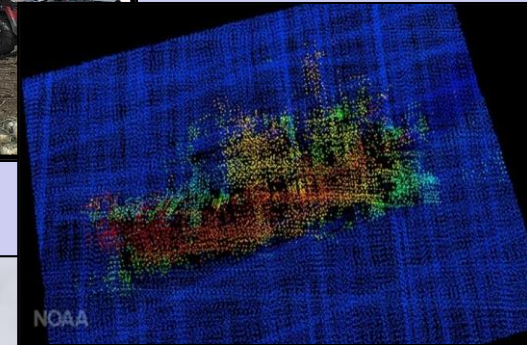
**Outreach Trips:**

**-44 Communities**



## Focus in FY-18

- Status Quo
- Crab Pot Weighing
- Arctic Outreach
- Commercial Skiff Exemptions
- Investigations:
  - ALASKA JURIS
  - DESTINATION
  - EXITO





# COMMERCIAL FISHING VESSEL SAFETY



## Plans/Initiatives for FY-19

- Status Quo
- Comm. Skiff Safety
  - w/ NIOSH
- Dive Harvest Safety
- ADFG Training
- Investigations:
  - ALASKA JURIS
  - DESTINATION
  - EXITO

